

Serial Port Tester

The serial port tester is a utility that can be used separately from WinCounter to analyse the operation of the serial ports on a computer. You can use it to verify the correct operation of sensors and opto-coupled controllers.

Downloading

You can download the latest version from www.wincounter.com/downloads/serialporttester.exe

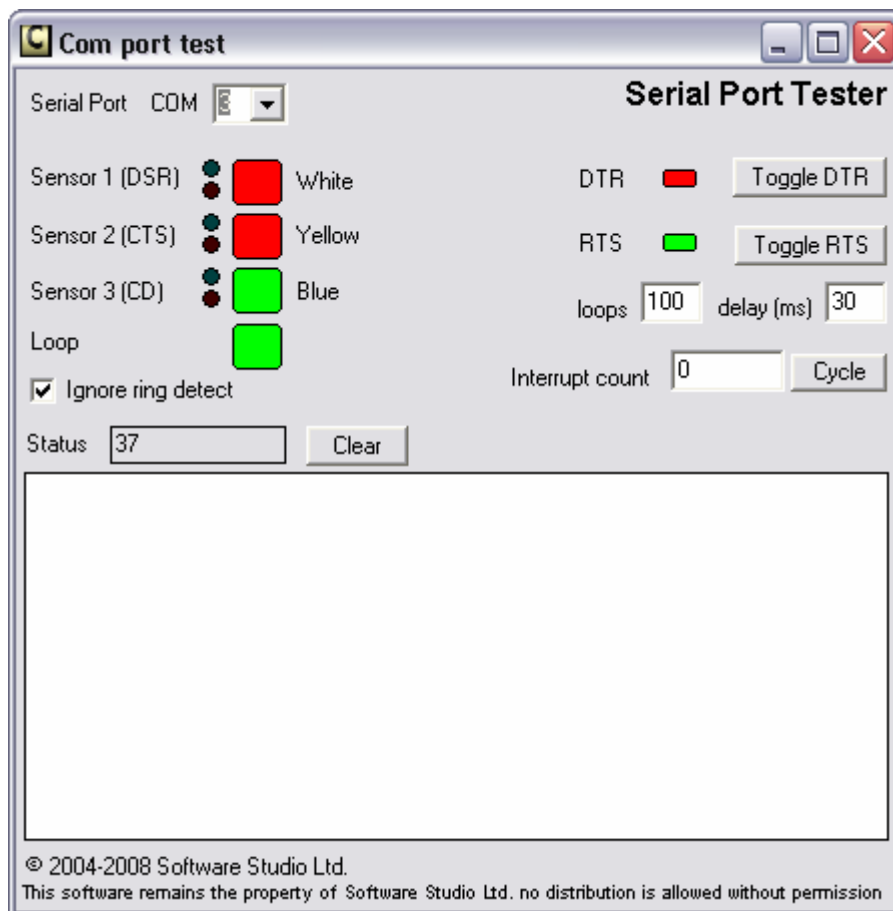
Running

The serial port tester is a single executable file called serialporttester.exe. You can save the file to any location on your computer and run it by double clicking it.

Make sure you don't have any other software running that is using your com port. Make sure WinCounter is not running!

Using the serial port tester

When you first run the tester you should see a screen like this:



Starting

You can choose a com port to test using the list of serial ports. It will attempt to open Com1 when it starts. If any ports are not valid or busy, you will get a pop-up message saying so.

The serial port has two output lines. DTR and RTS, there are indicators for these on the right of the screen. Verify that DTR is red and RTS is green.

Loop

WinCounter assumes the RX and TX lines of the serial port are connected together. This is pin 2 and three on a nine pin connector. The "Loop" indicator will be coloured green if these pins are looped correctly. If the loop indicator is red check that you are connected to the right port and verify that pins 2 & 3 are connected together.

Input lines

The three large indicators show the states of the three handshaking input lines on the com port. These lines are labelled Sensor 1, Sensor 2 and Sensor 3. They should change from red to green as the sensor is triggered. i.e. they should follow the lights on the opto-coupler.

Output lines

The two output lines (DTR and RTS) can be toggled by clicking the "Toggle DTR" and "Toggle RTS" buttons.

Click the "Toggle DTR" button once. The DTR indicator should turn green. You should notice the colour of the Input line indicators change from red to green. They should not change when the sensor changes.

The indicators should only follow the sensors when DTR is red and RTS is green.

Timing tests

On the right of the screen there are some utilities for testing port timing. These are not relevant for testing WinCounter operation. They can be used to verify the correct operation of a USB to Serial adaptor.